



it's about time

Kx for Manufacturing

Accelerate Your Evolution Into Industry 4.0

Kx for Manufacturing is the world's fastest sensor data historian and analytics platform. It is a high-performance, cost-effective and low latency platform for ingesting, processing, and analyzing real-time, streaming and historical data from industrial equipment sensors and enterprise systems.

Kx is a single integrated software platform enabling quick, easy implementation and low TCO. It can be deployed on premises, in the cloud or as a hybrid configuration to suit client and regulatory needs.



Performance

Featuring a superior columnar-structured time-series database and *q*, its integrated query language, Kx can scale anywhere from thousands to hundreds of millions of sensors, at any measurement frequency whilst maintaining extreme levels of performance.

Kx has the ability to ingest and process 4.5 million sensor measurements and events per second per core using just one server. With the same server, Kx can store and analyze trillions of records, fulfill query responses in microseconds, and scale both vertically and horizontally. Assess the performance of entire plants and machines in real-time and feed data into predictive and machine learning models

Analytics

Kx can capture, analyze and store high frequency time-series data from thousands of sensors to compare with historical data for fault and anomaly detection. It can support any sensor measurement, measurement frequency, tags and attributes, with nanosecond precision and time-based aggregations.

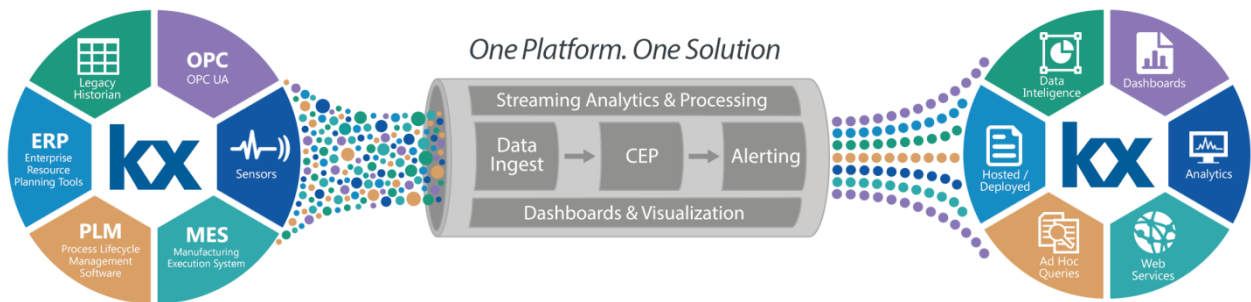
At a Glance



Powered by the world's fastest time-series in-memory and columnar database, Kx is able to handle millions of events and measurements per second, gigabytes to petabytes of historical data, with nanosecond resolution, more efficiently and cost-effectively than any available alternatives.

The Kx Advantage

- High performance, low latency processing powered by Kx technology
- Deploy on-premises, in the cloud or as a hybrid configuration
- Ingest and process 4.5 million sensor measurements and events per second per core
- Supports any sensor measurement, frequency, tags and attributes with nanosecond precision
- Extendible analytics library for analyzing historical and real-time data
- Ability to capture, store and process petabytes of data
- Stream processing platform with in-built Complex Event Processing
- Rich customizable visualization through integrated HTML5 dashboards enabling self-service Business Intelligence
- Single integrated software platform for quicker, easier implementation, lower cost and reduced TCO



Industrial IoT

Assess the performance of entire plants and machines in real-time and feed data into predictive and machine learning models. Make data and analytics available to statistical process and performance management systems.

Take control of your operating environment. Identify faults and predict potential failures, plan maintenance to maximize your up-time and throughput.

Interoperability

Use Kx to integrate with legacy systems and multiple data sources, enabling you to augment or replace existing historians. Transition from your current historian to the world's fastest; overcome current latency issues and bottlenecks with the sheer power of Kx.

Visualization

Out-of-the-box HTML5 dashboards provide feature-rich visualization and control tools including powerful OLAP drill-down features and query builders. Dashboards can be effortlessly customized and extended for specific testing, monitoring and research requirements. Dashboards can be shared across user groups or entitled to individual users.

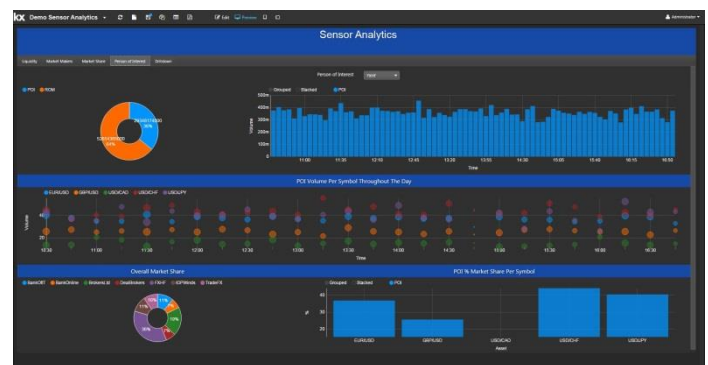
About Kx

Kx has been the software leader for complex analytics on massive-scale streaming data for over two decades. The Kx technology is an established and trusted standard for trading, surveillance and research in financial services. Kx has emerged as the elegant, integrated solution to the analytic needs of the Pharma, Retail, Utilities and High Tech Manufacturing industries scaling effortlessly to the data challenges of the Internet of Things.

Kx is a division of First Derivatives plc. Listed on the London Stock Exchange [FDP:LN] First Derivatives is a specialist software and consulting organization with an uninterrupted track record of customer success and profitable growth since it was listed in 2002.

Scalability

Scale vertically or horizontally across machines using modular architecture. Supports thousands of concurrent time-series queries involving trillions of rows of data, and analytic performance that is leagues above any of the alternatives.



Edge

Perform analytics at the edge. The small footprint of Kx enables the use of Complex Event Processing (CEP) on smaller appliances and industrial IoT gateways with sub-millisecond latencies. Forward this data securely to a centralized location for consolidated analysis and situational awareness.

Kx in Action

Visualize and Explore Data

- Dashboards for Kx
- Analyst for Kx

Control, Deploy & Monitor

- Control for Kx
- Stream for Kx
- Kx for Monitoring

Industry Solutions

- Finance
 - Surveillance
 - Algo
 - Flow
- Pharma
- Utilities & IoT

Head Office

3 Canal Quay,
Newry,
BT35 6BP
N. Ireland
+44 (0)283 0252242

London

Cannon Green Building,
1 Suffolk Lane,
EC4R 0AY
United Kingdom
+44 (0)207 337 1210

New York

45 Broadway,
NY 10006
USA
+1 212-447-6700

Singapore

55 Market Street,
048941
Singapore
+65 6592 1960

Sydney

22 Pitt Street,
NSW 2000
Australia
+61 (02) 9236 5700

Toronto

31 Lakeshore Road East,
Mississauga, On,
L5G 4V5
Canada
+1 289-329-0636

Tokyo

Sanno Park Tower,
2-11-1 Nagata-cho,
Chiyoda-ku,
100-6162
Japan
+81 (0)36 205 3494