



it's about time



Control for Kx

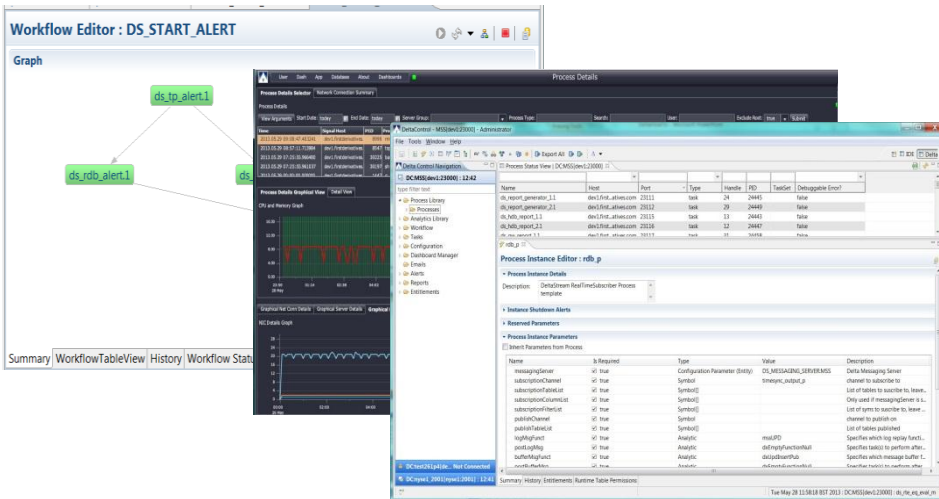
A Framework of Visibility, Governance and Control

Control for Kx provides our clients with the flexibility required for product development and design, but with the ability to exercise rigorous control across their application landscape, with full visibility into what processes are currently running and a resilient governance framework in place to ensure full ownership and accountability.

This product represents an all-encompassing code and process management system, acting as a framework of visibility and governance across Kx applications and processes, allowing clients to build up libraries of analytics and process workflows for rapid application development, debugging and continuous deployment.

A centralised configuration management system controls where, when and how applications are run, providing cross-landscape consistency over development patterns, release management and version control.

Its enterprise features form the core on which we have built all Kx products. Control for Kx offers a single integrated software platform, providing the framework for quicker, easier implementation of custom solutions and lower overall TCO.



Performance – Provides comprehensive enterprise level functionality for rapidly deploying, configuring and running high performance, large volume data processing platforms.

Extensibility – Simple to build upon by adding further Kx tools or solutions, integrating seamlessly with Dashboards, Analyst and Stream for Kx.

Flexibility – A more flexible environment than typical canned solutions, providing the enterprise features that form the core on which we have built all our Kx products.

At a Glance



Control for Kx is an all-encompassing code and process management system, allowing our clients to exercise rigorous control across their analytic landscape.

The Kx Advantage

- A platform for rapid application development with robust run-time management
- Pre-built analytics repository for historical and real-time data
- Includes a repository of rich, out-of-the-box process templates
- Allows for continuous deployment of code base
- Single integrated software platform for quicker easier implementation and lower TCO
- High performance and scalability of Kx
- Enterprise features, security, auditing, logging, archiving and compression
- Integration with version control platforms
- Standardized and streamlined maintenance and support

